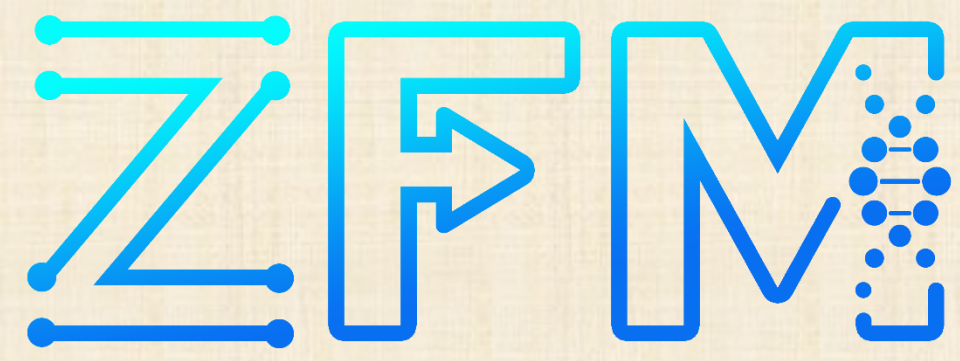




First ex-vivo positronium imaging of tissues with modular J-PET scanner using ^{44}Sc radionuclide

Karol Kubat^{1,2}, Manish Das^{1,2}, Sushil Sharma^{1,2}, Bartosz Leszczyński¹, Ewa Ł. Stępień^{1,2} and Paweł Moskał¹,

On behalf of the J-PET Collaboration



¹ Marian Smoluchowski Institute of Physics WFAIS UJ, Prof. St. Łojasiewicza St. 11, 30-348 Kraków

² Center for Theranostics, Kopernika St. 40, 31-034 Kraków

*e-mail: karol.kubat@uj.edu.pl



Introduction

Positronium Lifetime Imaging (PLI), an advanced extension of Positronium Emission Tomography (PET), is an emerging diagnostic modality [1,2,3]. It has potential to probe nano-scale environmental properties such as hypoxia, tumor microenvironment pathology by mapping the spatial distribution of Ps lifetime in biological tissues [4, 5, 6]. Despite the common consensus on its advantages and ongoing progress in adaptation of reconstruction algorithms and detector technology, PLI faces slow translation in clinical applications mainly due to two reasons: (1) measurement of nano-second positronium lifetimes requires fast gamma-ray detectors, and (2) new radioisotopes that provide both medically suitable half-life and high positron yield accompanying a prompt gamma signal for Ps lifetime estimation. The first in-vivo results on PLI of human brain was reported by J-PET collaboration using ^{68}Ga radioisotope [7]. However, the low prompt gamma yield of ^{68}Ga , only a $\sim 1.34\%$ prompt- γ branching ratio, poses challenges for accurate lifetime estimation due to limited statistics [8].

Aim: To address this, ^{44}Sc has emerged as a highly promising isotope for PLI [9], boasting an optimal decay profile: a clinically suitable half-life of 4.04 hours, an ultrashort de-excitation delay of 2.61 ps, and a 100% decay probability producing a single, high-energy (1157 keV) prompt gamma following positron emission [8].

Objective: In this work, we report the successful application of PLI using ^{44}Sc , performed with the state-of-the-art Modular J-PET tomograph, featuring triggerless data acquisition enabling simultaneous multiphoton detection [7].

Materials and Methods

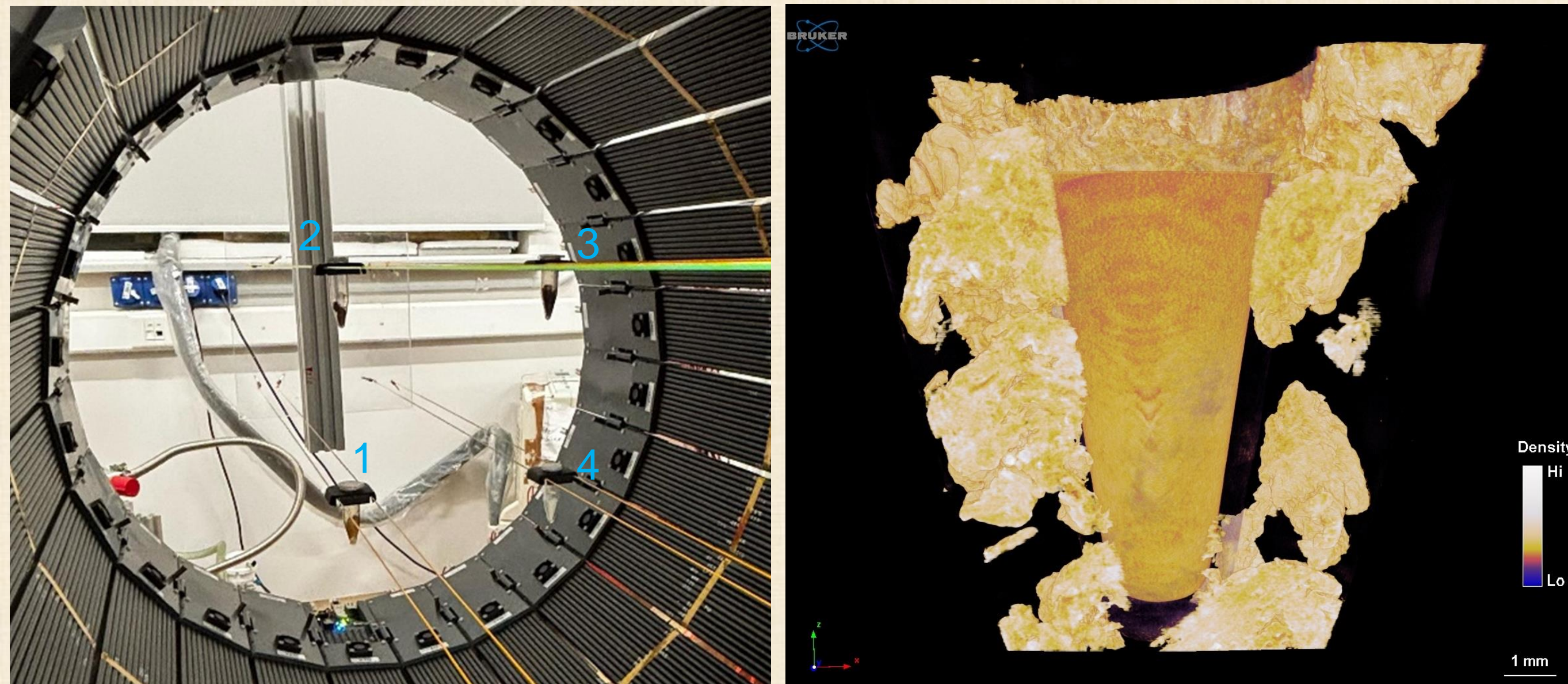


Figure 1. Scheme of sample setup in J-PET detector (Left), Myxoma sample micro-CT image after experiment (Right).

Setup consisted of 5 samples in total 4 phantoms shown on Fig. 1L and certified reference material made from fused silica [10]. Samples placed in phantoms are:

1. Adipose tissue
2. Cardiac myxoma tissue
3. Thrombin blood clot
4. XAD-4

Event selection was based on the simultaneous detection of two 511 keV photons and one de-excitation photon, enabling the reconstruction of positronium lifetime images. The reconstructed annihilation positions, obtained using the two 511 keV photons along with the positron lifetime, was used to identify regions of interest (ROIs) in image samples. Whereas the o-Ps lifetime was estimated utilizing the registration time of an additional prompt gamma

as the o-Ps formation time. The obtained o-Ps lifetime shows good agreement with previously reported values for biological tissues [3, 11]. Lifetimes of positronium is calculated by fitting superposition of the convolution of Gauss and exponential functions.

$$y = y_0 + \frac{A_1}{t_1} * \frac{\exp(0.5 * \left(\frac{w}{t}\right)^2 - \frac{(x - x_c)}{t_1}) * (\text{erf}(\frac{z_1}{\sqrt{2}}) + 1)}{2} + \dots$$

Acknowledgements:

We acknowledge support by the National Science Centre of Poland through grants MAESTRO no. 2021/42/A/ST2/00423, OPUS no. 2021/43/B/ST2/02150, OPUS24+LAP no. 2022/47/1/NZ7/03112, SPUB, no. SPUB/SP/627733/2025 by Ministry of Science and Higher Education, and by the the SciMat and qLife Priority Research Areas budget under the program Excellence Initiative - Research University at the Jagiellonian University.

We also acknowledge Polish high-performance computing infrastructure PLGrid (HPC Center: ACK Cyfronet AGH) for providing computer facilities and support within grant no. PLG/2024/017688.

Bibliography:

[1] P. Moskał, Proc. 2019 IEEE Nucl. Sci. Symp. Med. Imaging Conf. (NSS MIC), Manchester (2019)

1-3, DOI: 10.1109/NSS/MIC42101.2019.9059856

[2] P. Moskał et al., IEEE Transactions on Radiation and Plasma Medical Sciences Early access

(2025), DOI: 10.1109/TRPMS.2025.3583554

[3] P. Moskał et al., Science Advances 7 (2021) eab439

[4] P. Moskał et al., EJNMMI Physics 10 (2023) 22

[5] P. Moskał et al., Bio-Algorithms and Med-Systems 17(4) (2021) 311-319

[6] P. Moskał et al., Nature Communication 12 (2021) 5658

[7] P. Moskał et al., Science Advances 10 (2024) adp2840

[8] M. Das et al., Bio-Algorithms and Med-Systems 19 (2023) 87-95

[9] P. Moskał, E. Stępień, PET Clinics 15 (2020) 439

[10] *NMJ CRM Catalog 2023-2024*.

[11] Avachat, A.V., Mahmoud, K.H., Leja, A.G. et al. Ortho-positronium lifetime for soft-tissue classification. Sci Rep 14, 21155 (2024).



Results

Results obtained from 3h of measurement with J-PET modular system. Firstly, from reconstructed position histograms with geometrical cuts presented in Tab. 1. lifetimes from interesting region is selected. After that lifetime histograms with bin width 0.2 ns is analyzed using Equation from Methods.

Table 1. Geometrical selection of lifetimes for samples.

	X plane cut [cm]	Y plane cut [cm]	Z plane cut [cm]	Real position [cm]
Adipose tissue	-11.8:-7.8	-13:-9	-5:5	-10;-10;0
Cardiac myxoma tissue	-12:-8	7.4:11.4	-5:5	-10;10;0
Thrombi blood clot	8:12	7.7:11.7	-5:5	10;10;0
XAD4	8:12	-12.3:-8.3	-5:5	10;-10;0
CRM (fused silica)	-12.5:-7.5	11.6:15.6	10:23	-10;14;15

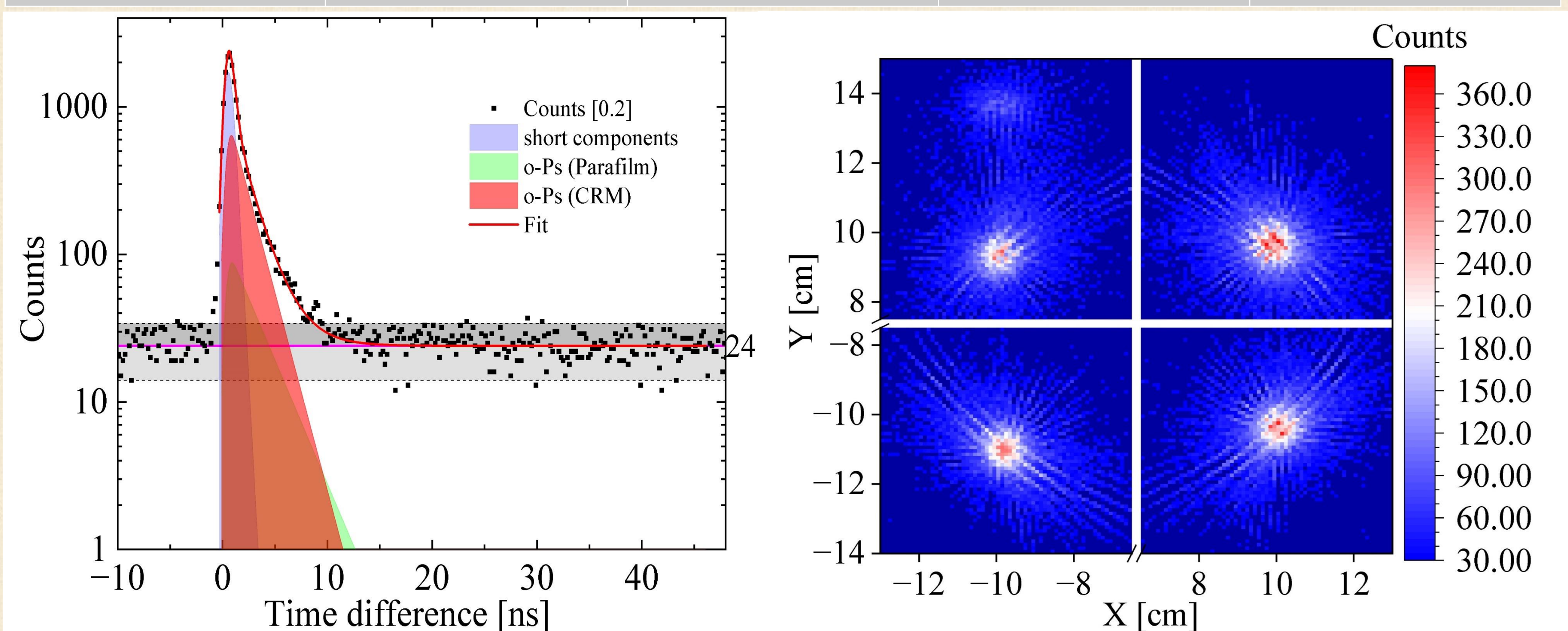


Figure 2. Time difference graph of CRM Sample (Left), XY counts heatmap with 0.1 cm binwidth (Right).

As quality control check yield correct o-Ps lifetime of fused silica with intensity 42%. The identification of positronium lifetime correlating with PCR tubes in which Scandium was placed resulted in 1.95 ns lifetime included in further analysis of samples. After performing analogical analysis for 4 phantoms in chosen ROI from Tab. 1. We acquired results presented in Tab. 2.

Table 2. Results of analysis of lifetimes for phantoms.

Sample	Sigma [ns]	1 st Intensity [%]	1 st lifetime [ns]	2 nd Intensity [%]	2 nd lifetime [ns]	3 rd Intensity [%]	3 rd Lifetime [ns]	4 th Intensity [%]
Adipose tissue	0.344(2)	8(2)	0.052(2)	71(2)	0.416(4)	8.2(1)	2.82(22)	12.5(1)
Cardiac myxoma tissue	0.345(1)	-	-	77.1(1)	0.389(5)	22.9(1)	1.96(5)	-
Blood clot	0.356(2)	23(2)	0.055(1)	55(2)	0.424(9)	11.9(7)	1.82(9)	10.4(2)
XAD 4	0.361(2)	24(2)	0.060(1)	55(2)	0.435(7)	5.7(4)	4.49(29)	14.7(5)

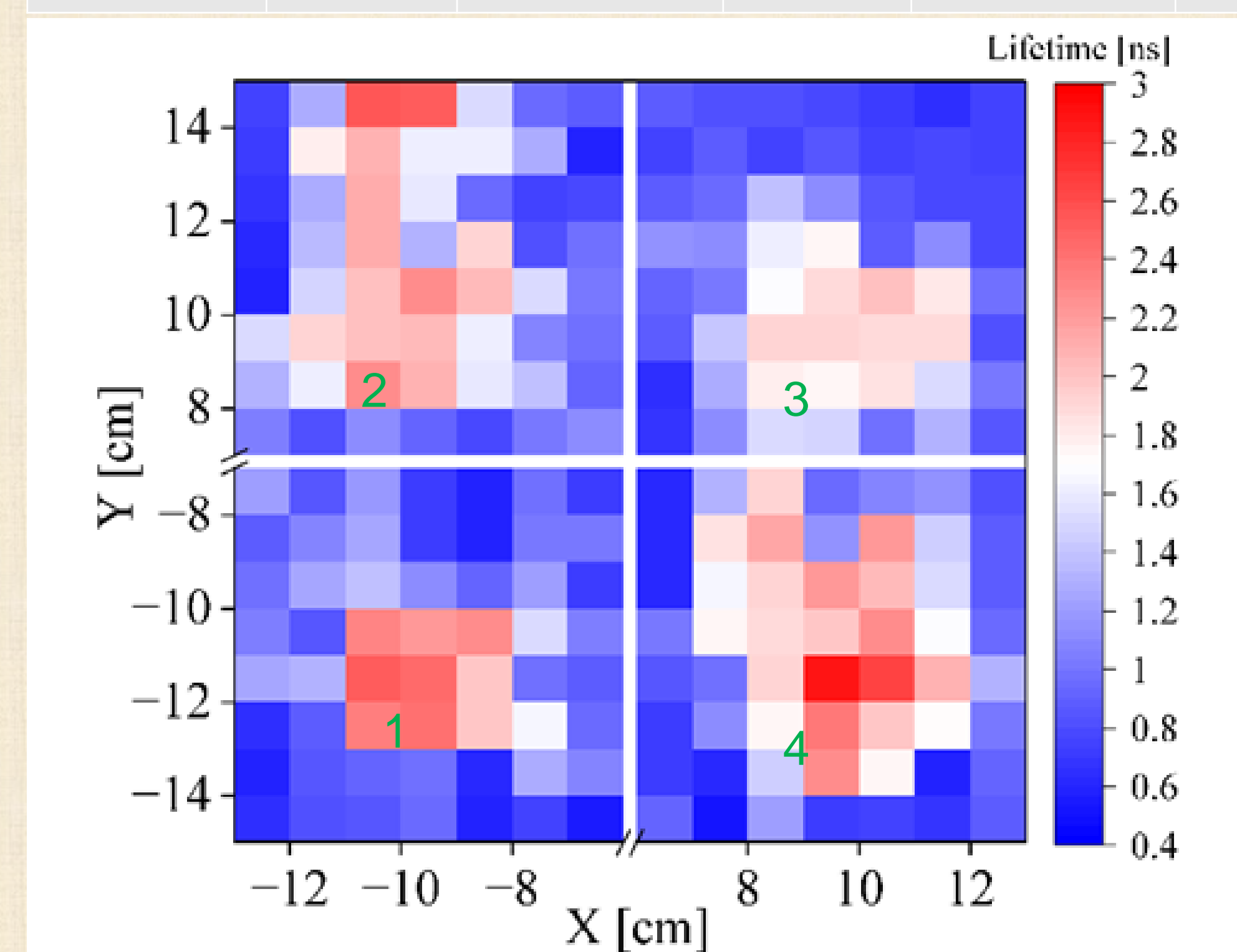
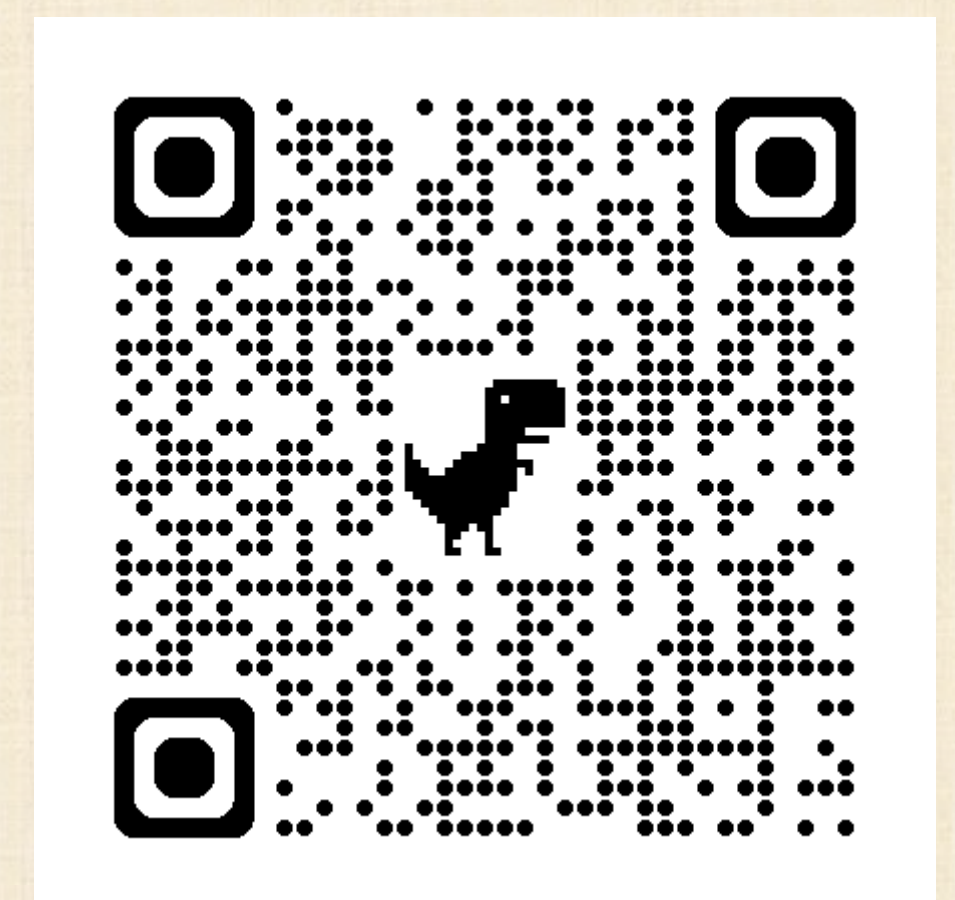


Figure 3. XY plane heatmap of o-Ps lifetimes for 4 phantoms and CRM material with 1 cm bins.

Fig. 3 give insight into possibilities of J-PET system in terms of PLI application however as the fitting check and manual interpretation is used in this experiment result this gives possibilities for implementation of the correct algorithm or even some machine learning solution to speed up the process and then lower the needed voxel size to minimum.



Publication

Conclusions

- This study presents the first high statistics ex vivo positronium imaging of human tissues using the modular J PET scanner with ^{44}Sc .
- The potential of ^{44}Sc for positronium lifetime imaging is demonstrated, showing much higher data yield than ^{68}Ga , even for small 2–3 cm³ samples.
- ^{44}Sc enabled positronium imaging of a phantom containing human adipose tissue, cardiac myxoma, thrombi, XAD 4 polymer, and fused silica CRM.
- J PET effectiveness with ^{44}Sc was confirmed by accurate o-Ps lifetime reconstruction in CRM and XAD 4, and tissue lifetimes matched previous results.

